

HR 352

THE ULTIMATE 35' CRUISER





Development in boat building techniques has progressed immensely over recent years. Knowledge gained from regattas can often be applied to cruising yachts. Our new HR 352 offers proof of this. The well designed construction in line with today's demands on broad, fast boats, the high freeboard where the aesthetically desirable lines are maintained, coupled with an underwater hull shape of divided fin and skeg, and up to the minute thinking in rig design, all add up to our new HR 352 not only possessing excellent sailing qualities in light airs but also in hard weather and high winds in rough seas.



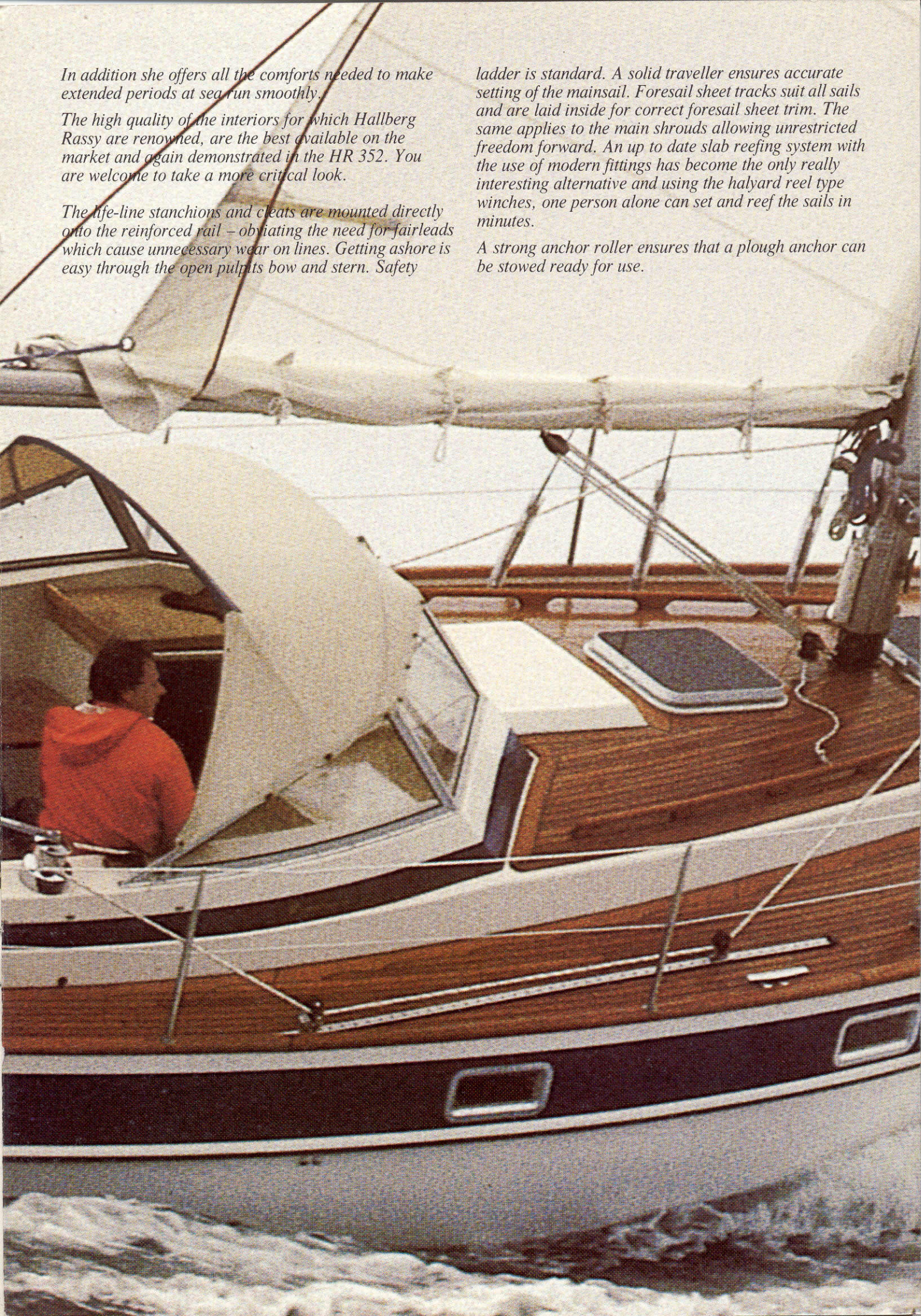
In addition she offers all the comforts needed to make extended periods at sea run smoothly.

The high quality of the interiors for which Hallberg Rassy are renowned, are the best available on the market and again demonstrated in the HR 352. You are welcome to take a more critical look.

The life-line stanchions and cleats are mounted directly onto the reinforced rail – obviating the need for fairleads which cause unnecessary wear on lines. Getting ashore is easy through the open pulpits bow and stern. Safety

ladder is standard. A solid traveller ensures accurate setting of the mainsail. Foresail sheet tracks suit all sails and are laid inside for correct foresail sheet trim. The same applies to the main shrouds allowing unrestricted freedom forward. An up to date slab reefing system with the use of modern fittings has become the only really interesting alternative and using the halyard reel type winches, one person alone can set and reef the sails in minutes.

A strong anchor roller ensures that a plough anchor can be stowed ready for use.



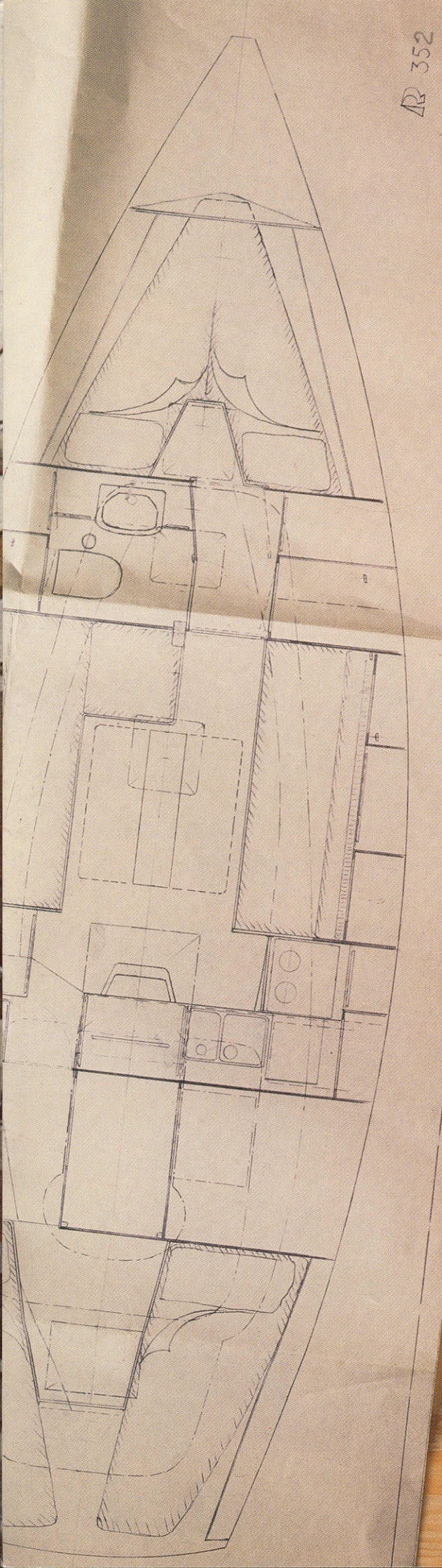
The low superstructure, the smooth teak deck and the strong teak capping not only give the HR 352 the feel of a big yacht but work on deck is made easier and less hazardous. A fixed windscreen with sprayhood is considered essential today both for protection in the cold climes of the north and against the sun in the south. A strong rubbing strake with brass strip is a must in over-crowded harbours.

The HR 352 has four skylights providing generous light and ventilation below deck.

When you sail this boat you immediately feel the perfect balance. Often this boat, with finger light helm, will sail itself and should you need anything from below, you can leave the rudder for a while.

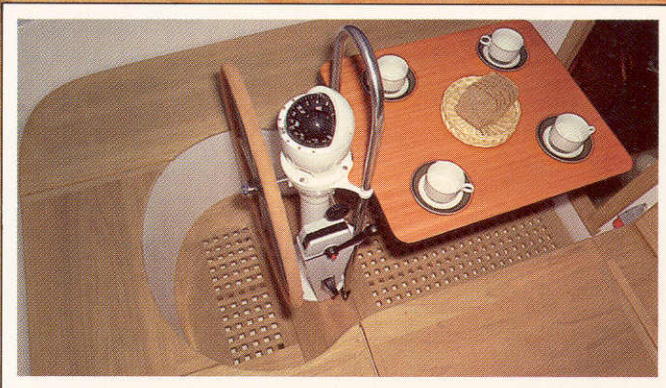
The HR 352 is the result of co-operation between Hallberg Rassy and Olle Enderlein, one of our most wellknown international naval architects.





CHRISTOPH RASSY
31.8.1978
OLLESEN

The HR 352 has a spacious, comfortable and protected cockpit where everything you need while sailing is within easy reach. Ample stowage space starboard side, a cockpit table quickly erected if you wish to enjoy sunny hours while in harbour.



Width and freeboard give generous space below deck. The aft cabin, easily accessible by walkthrough below deck, has its own hanging locker, shelves and other stowage space for personal belongings.

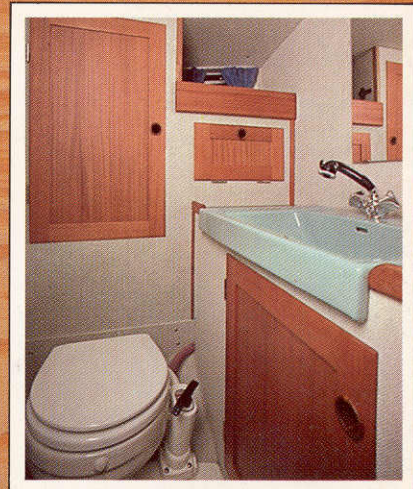


As an alternative, this boat can be supplied with the cockpit placed 15 centimetres lower, with direct access from there to the aft cabin but without the walkthrough. In this case stowage space is provided on port and starboard side. Saloon and galley as seen in picture.

The toilet compartment is unusually roomy where you can wash and dress comfortably, and is fitted with china wash basin and ample locker space. The floor is dished and drained for showering and covered with teak grating. Apart from cold water and shower the "Scandinavia" version has pressurised hot water. Skylight for effective ventilation is provided on both versions.

In the passage starboard side you find a further hanging locker and shelves.

The forward cabin has been utilised fully by insertion of a filler piece between berths. Here the length of berths is again two metres.





The galley directly by the accommodation ladder has a cooker with oven, a choice of paraffin cooker is available, double sink, icebox, cupboard, stowage space – everything arranged in L-shape to make the galley a joy to work in. The 'Scandinavia' version has hot water and a compressor unit which turns the icebox into a refrigerator.

Sailing gives you an appetite and a good meal in the right atmosphere with family and friends is often the highlight of the day. The HR 352 offers the right conditions for such enjoyable occasions having a very spacious saloon with well planned layout and furnishings, allowing free passage and unrestricted movement. Here is room for guests and crew to enjoy comfort without feeling cramped.

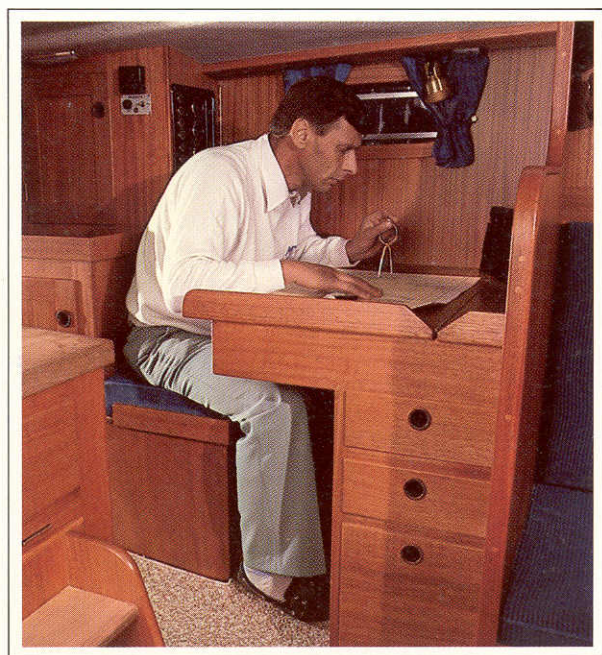
The saloon table is securely fixed and has drop leaves on both sides. The settee on portside is L-shaped. Soft furnishings are made of elegant, hardwearing materials. The space available behind and above the sofa due to the high freeboard can be fully utilised for stowage.







Quality at the right price. A few examples now:

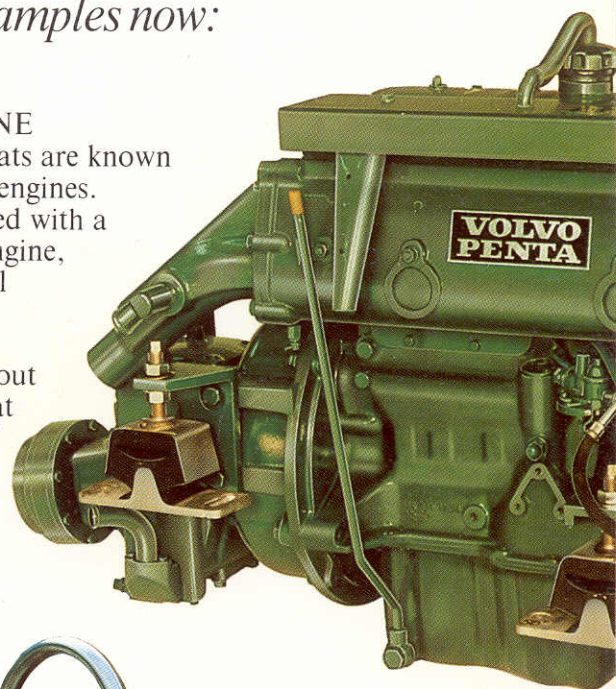


NAVIGATOR'S CORNER

Here you have an ideal spot for your navigating, with charts and instruments all together in one place. Also located here is the electrical switch board with fuses, switches for the different installations on deck, water and fuel gauges, voltmeter and socket.

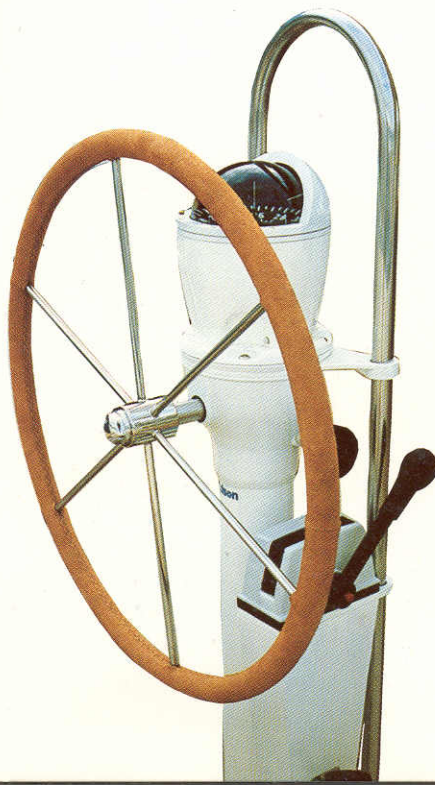
ENGINE

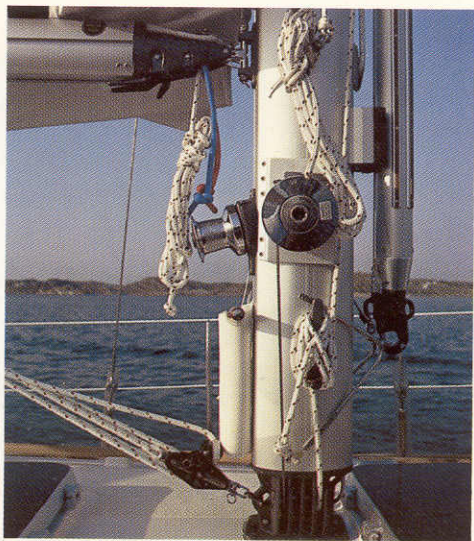
Hallberg Rassy boats are known for their powerful engines. The HR 352 is fitted with a 4-cylinder diesel engine, Volvo Penta model MD 21 b with 45 shaft hp. Fuel consumption is about a gallon per hour at a cruising speed of 7.2 knots.



STEERING

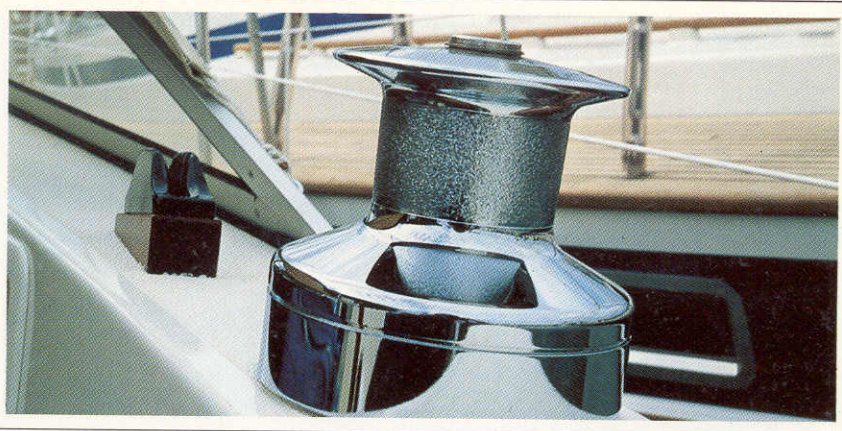
The HR 352 is fitted with Edson wheel steering, one of the best makes available today. The compass is a Sestrel, a name renowned world-wide for quality. Within easy reach a single-lever control for safe manoeuvring under power.





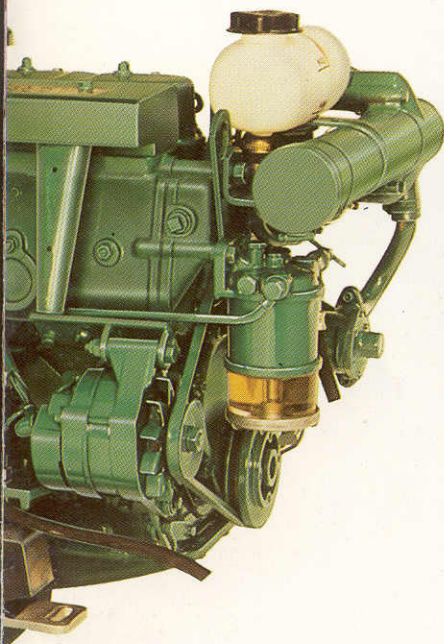
RIGGING

The rigging comes from Seldén Mast AB, one of the leading spar makers. For cruising purposes the spinnaker boom is taken care of in a most ingenious way when not in use: The track slider which runs along the spinnaker track on the mast can be lifted high enough to allow the spinnaker boom to be hoisted alongside the mast with the bottom end resting in a fitting. When needed, only the bottom end should be released. The spinnaker fastened to the boom and by bringing the upper end of the boom down, it can at the same time be swung out. The whole procedure is a one man operation with the boom always available yet having the deck conveniently clear.



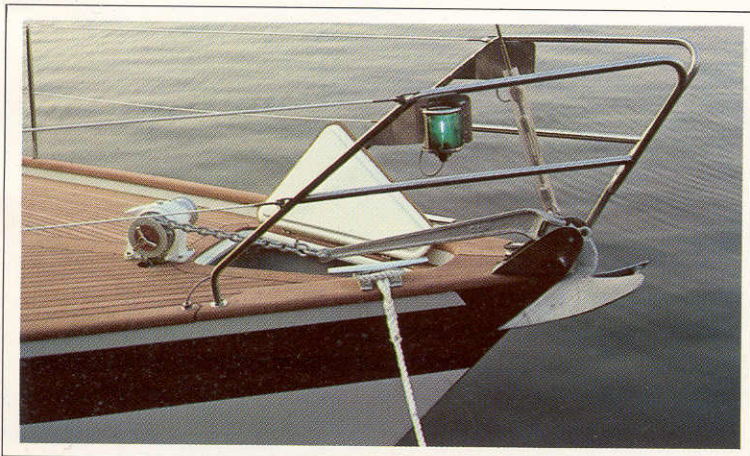
SHEET WINCHES

Naturally Lewmar two-speed. Winch handles "lock in".



SAFETY LADDER

The bathing ladder extends deep into the water which is an important safety aspect.

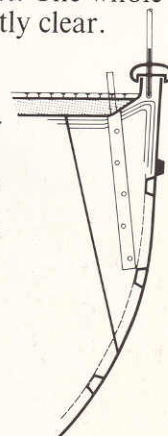


ANCHOR

A sturdy anchor roller ensures that also a plough anchor can be stowed always ready for use. Should you wish to have a windlass fitted, this is possible without the chain blocking the hatch.

HULL

The hull of the HR 352 is designed for sailing in all waters. The chain plates are heavy enough to lift the entire boat and it has been proved again and again that the moulded in iron keel is by far the sturdiest construction to cope with grounding.



LLOYD'S REGISTER OF SHIPPING
Y.S.C. DEPARTMENT

APPROVED

DATE 10 OCT 1978
SOUTHAMPTON

LLOYD'S CERTIFICATE

Each HR 352 is supplied with a Lloyd's Hull Construction Certificate, which means that the hull is built according to Lloyd's specifications. Each boat is inspected several times during construction. A Lloyd's surveyor personally supervises construction from moulding of the hull to mounting of rudder, chain plates and other fittings vital in achieving seaworthiness. When all requirements have been fulfilled, only then is a certificate issued. This helps maintain the high second hand value of Hallberg Rassy boats.



Member of Swedish Boating Industries Association



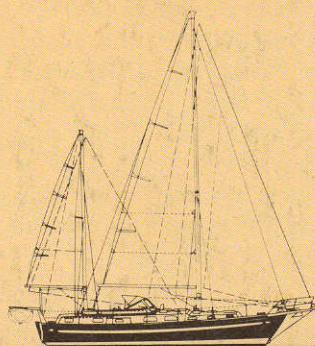
Hallberg Rassy constantly pursue modern boat building techniques combined with traditional craftsmanship and boat types which fit today's demands. This to a great extent has a bearing on you as a buyer getting value for money when choosing a Hallberg Rassy boat.

Hallberg Rassy

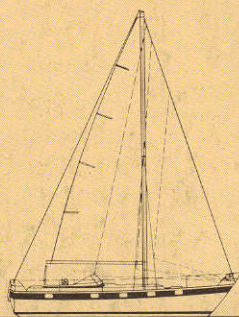
S-440 80 Ellös, Sweden
Tel. 0304-502 90.
Tx 2445 Rassy S

Hallberg Rassy Germany
2000 Hamburg 52,
Beselerstr. 6. Tel 040-89 83 42
Tx 2164025.

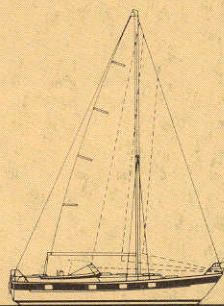
Hallberg Rassy Denmark
Pakhustorvet 2
6000 Kolding. Denmark.
Tlf. 05-53 29 00.



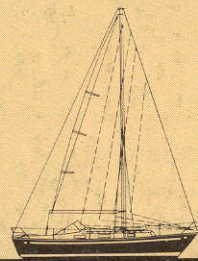
HR 41



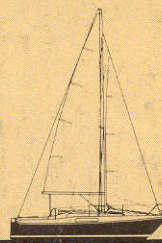
HR 38



HR 352



HR 31



HR 26